

FERMACELL

Dry Lining

On metal firrings

Description.

FERMACELL is a high performance, multipurpose building board that combines in a single product exceptional fire, impact and moisture resistant properties with high levels of acoustic insulation and weight carrying capacity. The simple squeegee-applied FST finishing system eliminates plastering trades and dries in 30 minutes.

Specification and Use.

FERMACELL is a dense, homogenous, square edged board that is butt-jointed using FERMACELL Jointstik adhesive. The board is fixed to proprietary metal firrings. FERMACELL recommend Protektor studwork, which is available from Cornercare (01562 515200).

Alternatively, FERMACELL may be mounted on to s/w timber battens (50 mm x 30 mm nominal) using FERMACELL screws or resinated, galvanised staples.

Full installation details are given in the FERMACELL Instruction Manual. NBS specifications and Autocad drawings are also available.

Notes.

When dry lining, FERMACELL recommend that metal firrings are fixed to the wall first, and then the board is fixed to the firrings. The use of dot and dab as a dry lining method is specifically not recommended for several reasons: the exceptional weight carrying capacity of FERMACELL may cause the adhesive bond to fail, and this method of building is not suited to the edge jointing adhesive system. The use of firrings adds little to the wall depth and provides a useful service cavity.

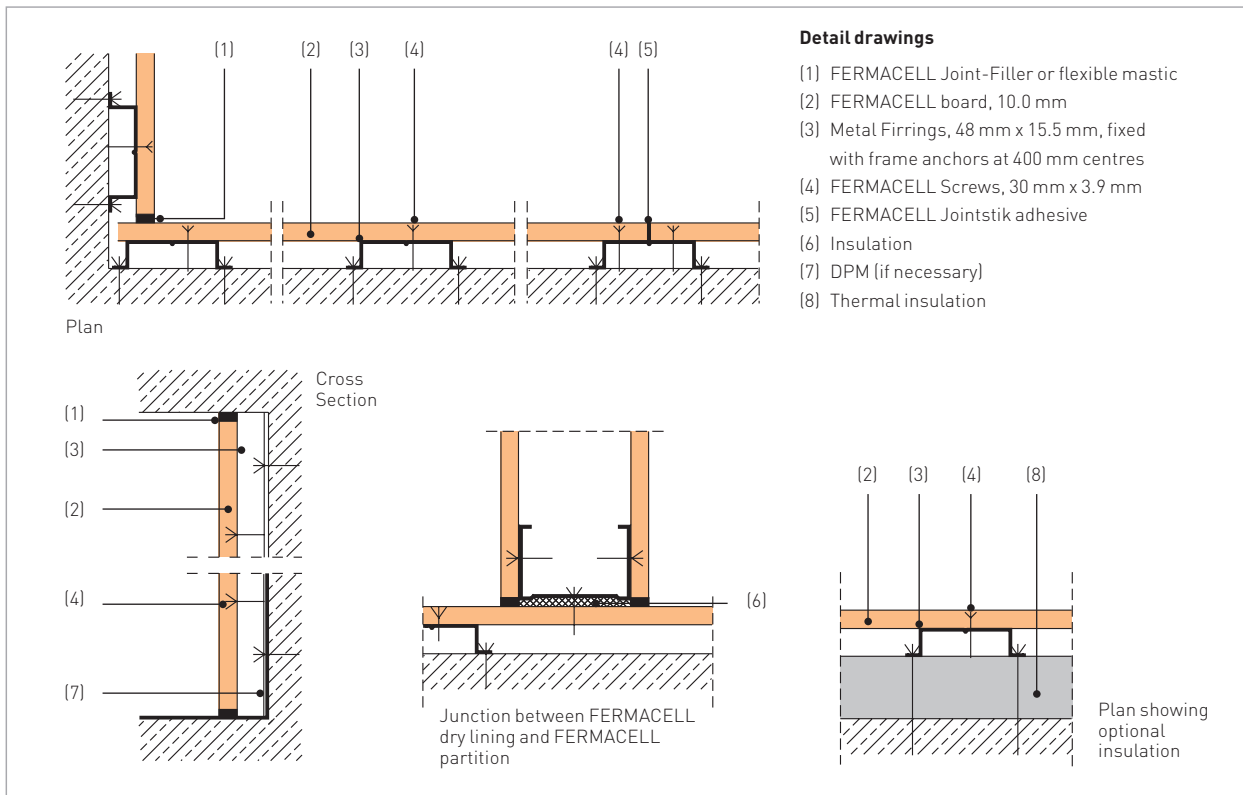
Where greater levels of thermal insulation are required, insulation boards may be sandwiched between the firiings and the wall.

Metal firrings may be fixed to the wall on plaster dabs. In this latter instance, a mechanical backup (frame anchors or similar) must be used.

Alternatively, metal firrings may be substituted by timber battens. These may be fixed to the wall using frame anchors. FERMACELL may be fixed to timber battens using FERMACELL screws or resinated, galvanised staples. A vapour barrier should be installed where necessary.

FERMACELL Dry Lining

On metal firrings



Technical Data:

Cladding	FERMACELL board, 10.0 mm	
Insulation	Optional	
Metal firrings	48 mm x 15.5 mm nominal @ 400 mm centres	
Additional Wall Thickness	From 40 mm	
Weight carrying ability	Ø 8 Toggle bolt	500 N
	Ø 5 Screw	300 N

Other construction details and technical information sheets are available from XELLA.

This publication contains detailed instructions for the correct installation of FERMACELL dry lining.

We reserve the right to make changes in the interest of technical improvement.

All information correct as at 08.03

Xella Dry Lining Systems
P.O. Box 10028
Sutton Coldfield B72 1WG

Telephone: 0870 - 6090306
Telefax: 0870 - 2402948
www.fermacell.co.uk